

Clarity Plus

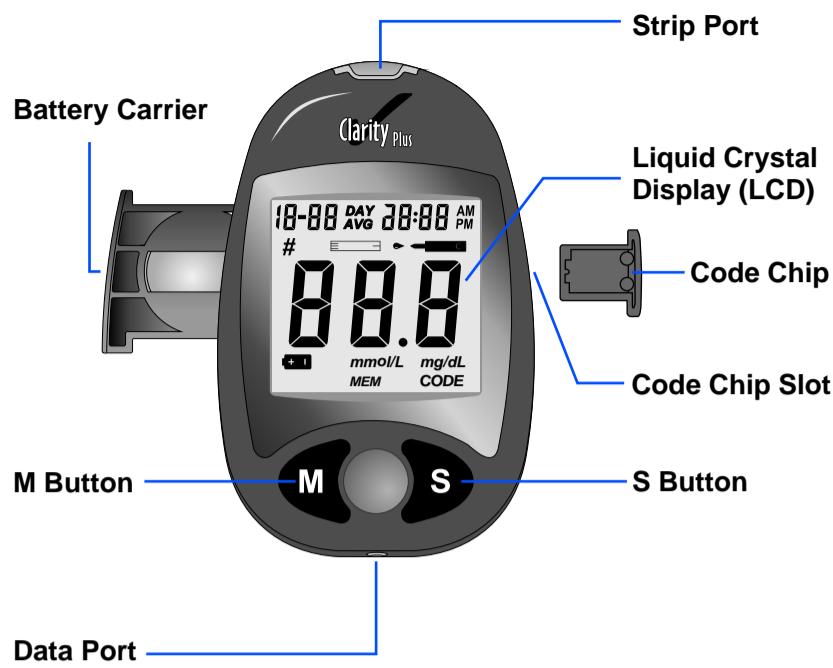
Blood Glucose Monitoring System

Quick Start Guide

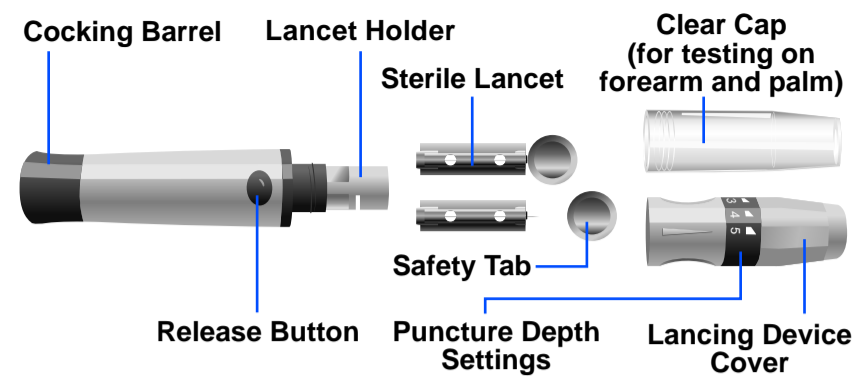
Simple instructions to help you start testing

Diagnostic Test Group, Boca Raton, FL USA 33431
 P: 561-347-5760 Tech Support: 1-877-485-7877 www.claritydiagnostics.com
 © 2009 Diagnostic Test Group, LLC. All rights reserved. Manufactured for Diagnostic Test Group, LLC.
 Made in China.

Meter



Lancing Device



Test Strip

Sample Tip

Apply blood or control solution here.



Check Window

Check to confirm that sufficient sample has been applied.

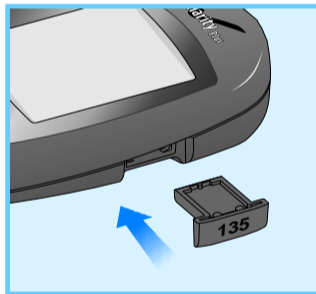
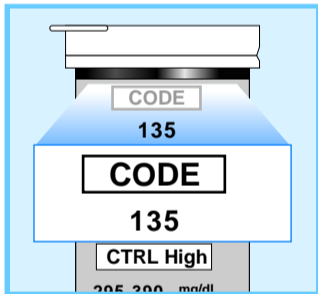
Contact Bars

Insert this end of the test strip into the meter until it stops.

1

Coding the Meter

1. You can easily find a code chip in your starter kit box. This code chip is used with the test strip packed in your carrying case when you first open the carrying case.
2. Compare the code number on the code chip with the code number printed on the test strip vial label.
3. With your meter turned off, insert the new code chip into the code chip slot of the meter.

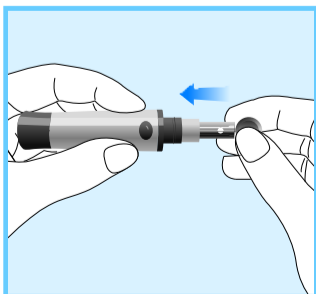
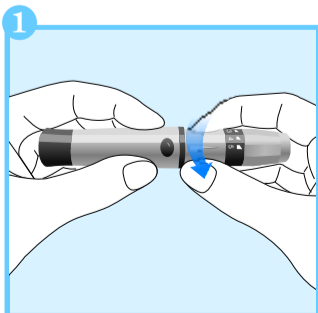


2

Getting a Drop of Blood

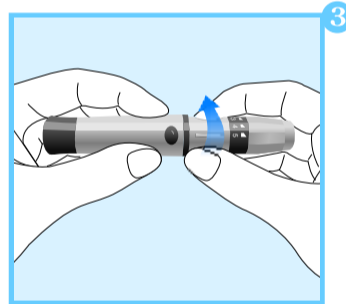
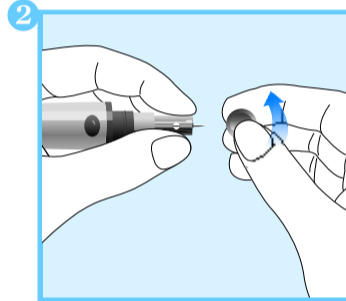
IMPORTANT: Prior to testing, wipe the test site with an alcohol swab or soapy water. Use warm water to increase blood flow if necessary. Then dry your hands and the test site thoroughly.

1. Unscrew the lancing device cover from the body of the lancing device. Insert a sterile lancet into the lancing device.



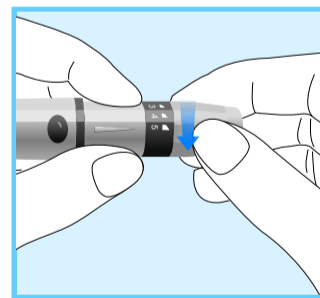
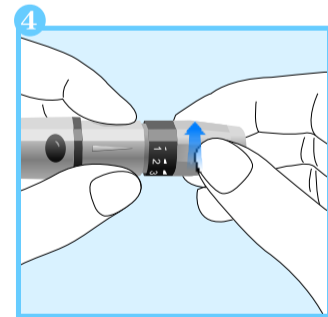
Getting a Drop of Blood (continued)

2. Hold the lancet firmly in the lancing device and twist the safety tab of the lancet until it loosens, then pull the safety tab off the lancet.

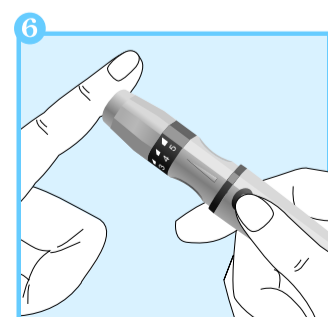
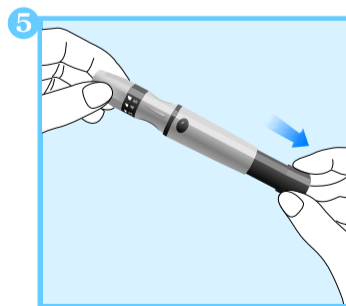


3. Carefully screw the cover back onto the lancing device.

4. Adjust the puncture depth by rotating the lancing device cover.



5. Pull the cocking barrel back to set the lancing device.



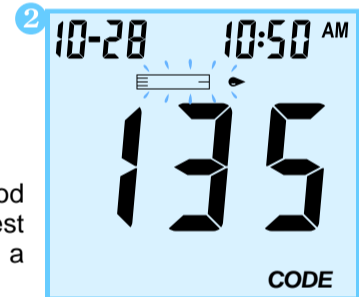
6. Hold the lancing device against the side of the finger to be lanced with the cover resting on the finger. Push the release button to prick your fingertip.

3

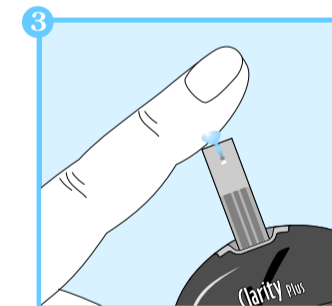
Testing Blood Glucose



1. Insert a test strip into the strip port, contact bars end first and facing up, to turn on the meter and display all the display segments.



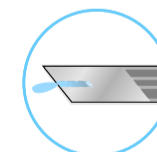
2. The blinking test strip and blood drop icon will indicate that the test strip is inserted correctly and a drop of blood can be added.



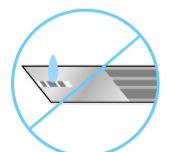
3. Touch the blood sample to the sample tip at the end of the test strip.

DO NOT :

- Apply sample to the front or back of the test strip.
- Smear the blood drop onto the test strip.
- Press your finger against the test strip.
- Apply a second drop of blood.

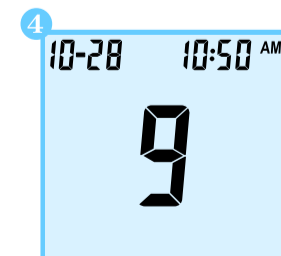


Correct



Incorrect

4. The meter will count down from 9 to 1 and then display the measurement results.



Test results are displayed in mg/dL.

Please see the user manual for more information. For help with any additional questions or issues, please contact Diagnostic Test Group Technical Support at 1-877-485-7877.